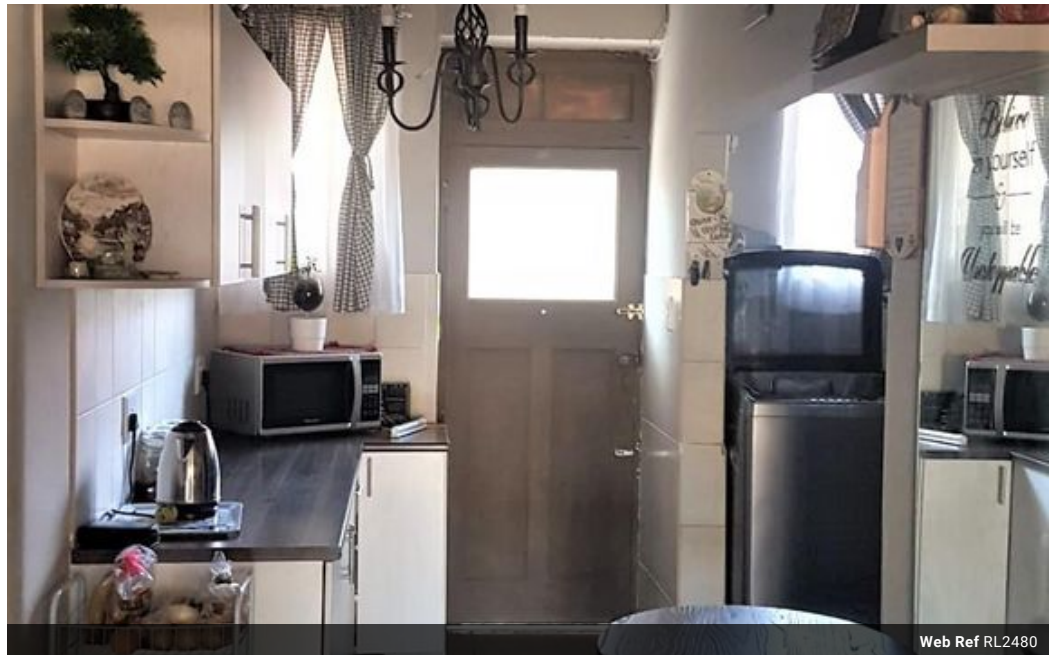




Chantelle Annandale
0663324741
chantelle@grose.co.za

Contact Head Office
011 917 3096

167 Heidelberg Road
Boksburg South Ext.2
Boksburg



Web Ref RL2480



R730,000

3 1

Monthly Bond Repayment R7,534.98
Calculated over 20 years at 11% with no deposit.

Transfer Costs R25,898.00 **Bond Costs** R19,565.00

These calculations are only a guide. Please ask your conveyancer for exact calculations.

Monthly Levy R1,300

Modern Ground-floor Unit In Popular Packwood Towers

Walking into this well maintained complex you will enjoy the welcoming sight of your community. This lovely ground-floor unit consists modern finishes and alot of comfort.

The owners enjoy the comfort of their sunny enclosed patio in winter or summer with their loved garden overlooking the complex.

There is three tiled and very spacious bedrooms along the luxury of a neat bathroom that consists of a bath toilet and basin.

What I love most about this unit is the modern kitchen with ample cupboard space and the fact that the owner included a back door leading into your courtyard.

Your warm cozy open plan lounge and dining room has enough space for family and friends to enjoy a day spent with you.

This unit has addition trailers / zozo space should you require some and there is two IBR Carport parkings.

If you...

Features

Pets Allowed Yes

Interior

Bedrooms	3
Bathrooms	1
Kitchens	1
Recep. Rooms	2

Exterior

Carports / Parkings	2
Security	Yes
Pool	No
Views	No

Sizes

Floor Size	80m ²
------------	------------------

