

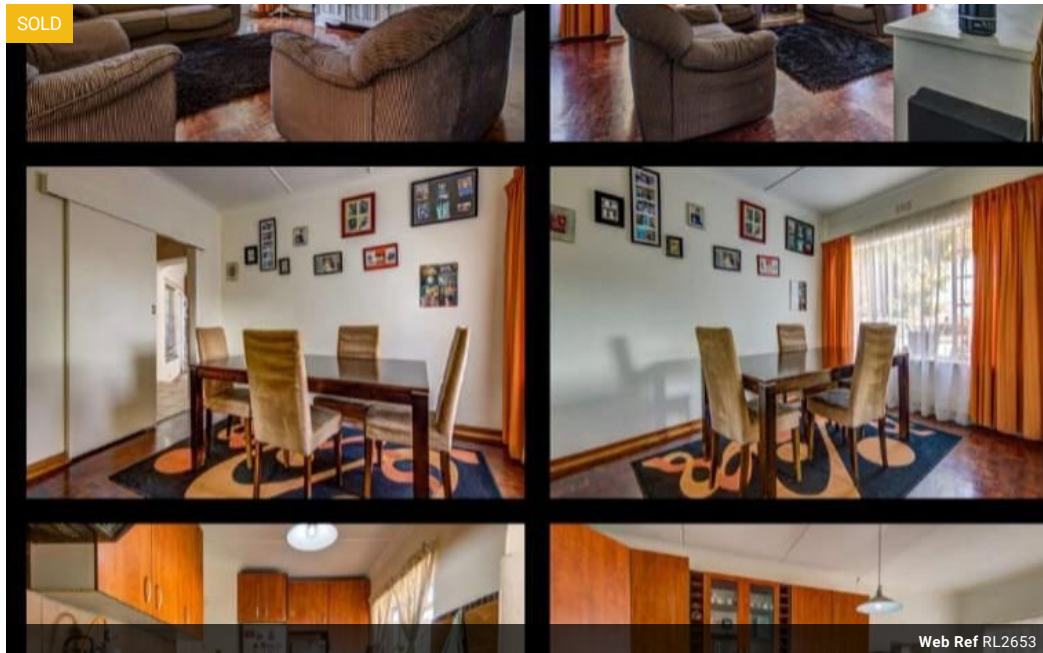


Chantelle Annandale
0663324741
chantelle@grose.co.za

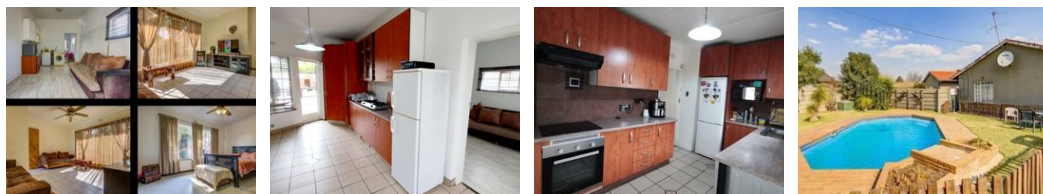
Contact Head Office

011 917 3096

167 Heidelberg Road
Boksburg South Ext.2
Boksburg



Web Ref RL2653



R1,320,000

Monthly Bond Repayment R13,624.89
Calculated over 20 years at 11% with no deposit.

Transfer Costs R38,217.00 **Bond Costs** R27,105.00
These calculations are only a guide. Please ask your conveyancer for exact calculations.

Monthly Rates R2,000

4 2 3

REDUCED ! SELLERS RELOCATING

PRICED FOR URGENT SALE OWNERS RELOCATING... BEAUTIFUL HOME.
Excited to introduce this family home of 1197sq meters located close to schools and amenities.

Remember the days you could teach your kids to ride their bicycles and play outside, this hits home to me with the property being in a Cul-da-sac, private and secure...

This neat home offers the peaceful serenity and is practical with it's lay out consisting of a 3 bedroom, 2 bathroom, neat spacious kitchen, lounge dining and family room.
a teenage pad added makes this home ideal to bring granny along.

Lovely pool in garden with a kid's playhouse / cottage. This home is trendy and your family will enjoy making memories.
If you wish to view, please contact today!

Features

Pets Allowed	Yes		
Interior		Exterior	Sizes
Bedrooms	4	Garages	Floor Size
Bathrooms	2	Carports / Parkings	Land Size
Kitchens	1	Dom. Accom.	1,197m ²
Recep. Rooms	2	Pool	1,197m ²
Studies	1		

