



**Dawn De Beer**  
0824478432  
dawn@grosec.co.za

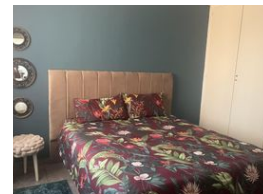
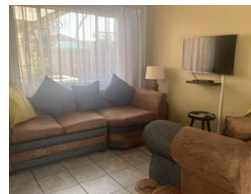
Contact Head Office

011 917 3096

167 Heidelberg Road  
Boksburg South Ext.2  
Boksburg



Web Ref DdB118



**R875,000**

**Monthly Bond Repayment** R9,031.65  
Calculated over 20 years at 11% with no deposit.

**Transfer Costs** R28,244.00    **Bond Costs** R21,450.00

These calculations are only a guide. Please ask your conveyancer for exact calculations.

**Monthly Levy** R2,175    **Monthly Rates** R548



## SIMPLEX IN POPULAR COMPLEX

This exceptionally neat facebrick simplex offers 2 sunny bedrooms (both take double beds) Newly painted !

One bathroom with corner bath, shower, toilet and vanity case.

Large lounge, open plan dining, fully tiled.

Modern kitchen with granite tops. Space for a fridge as well as 2 more appliances !

One lock-up garage as well as one covered lock-up carport and an open carport, right at the unit. Garage has built-in cupboard for storage.

Complex has a "paw-park" where you can take your dogs to run around ! (CATS ALSO ALLOWED)

Lovely private garden with your own built-in braai.

Stunning communal pool, also with braai facilities.

Excellent security. Gate guard plus intercom system and cameras in the complex. (Only 82 units in the complex)

## Features

### Interior

Bedrooms	2
Bathrooms	1
Kitchens	1
Recep. Rooms	2

### Exterior

Garages	1
Carports / Parkings	2
Security	Yes
Pool	Yes

### Sizes

Floor Size	80m <sup>2</sup>
------------	------------------

