

Kyle Redford
0832605042
kyle@grose.co.za

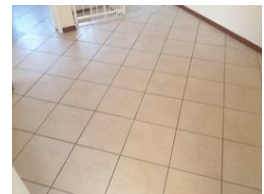
Contact Head Office

011 917 3096

167 Heidelberg Road
Boksburg South Ext.2
Boksburg



Web Ref RL2464



R1,320,000

Monthly Bond Repayment R13,624.89
Calculated over 20 years at 11% with no deposit.

Transfer Costs R38,217.00 **Bond Costs** R27,105.00

These calculations are only a guide. Please ask your conveyancer for exact calculations.

Monthly Levy R1,500 **Monthly Rates** R915

3 2.5 1

Stunning 3 Bedroom Townhouse in Eveleigh

A beautiful, spacious, modern 3 bedroom 2.5 bathroom townhouse in The Victorian. Situated in a quiet neighborhood opposite EG Jansen. Hosts 3 large bedrooms with BIC's. A big open plan lounge and dining area overlooked by a large open plan kitchen. A cozy pajama lounge as well. Hosting all modern fittings and fixtures to include underfloor heating. A laundry / storeroom. Lock up garage and with an additional parking bay. Seconds away from The Square shopping centre as well as EG Jansen. 4 minutes from the East Rand Mall and the R21 highway. 15 Minutes from OR Tambo. Take this opportunity to elevate your lifestyle. NOT TO BE MISSED. Contact me today for your chance at this little beauty.

Features

Interior

Bedrooms 3
Bathrooms 2.5
Recep. Rooms 2

Exterior

Garages 1
Carports / Parkings 1
Pool No

Sizes

Floor Size 134m²
Land Size 2,312m²

