

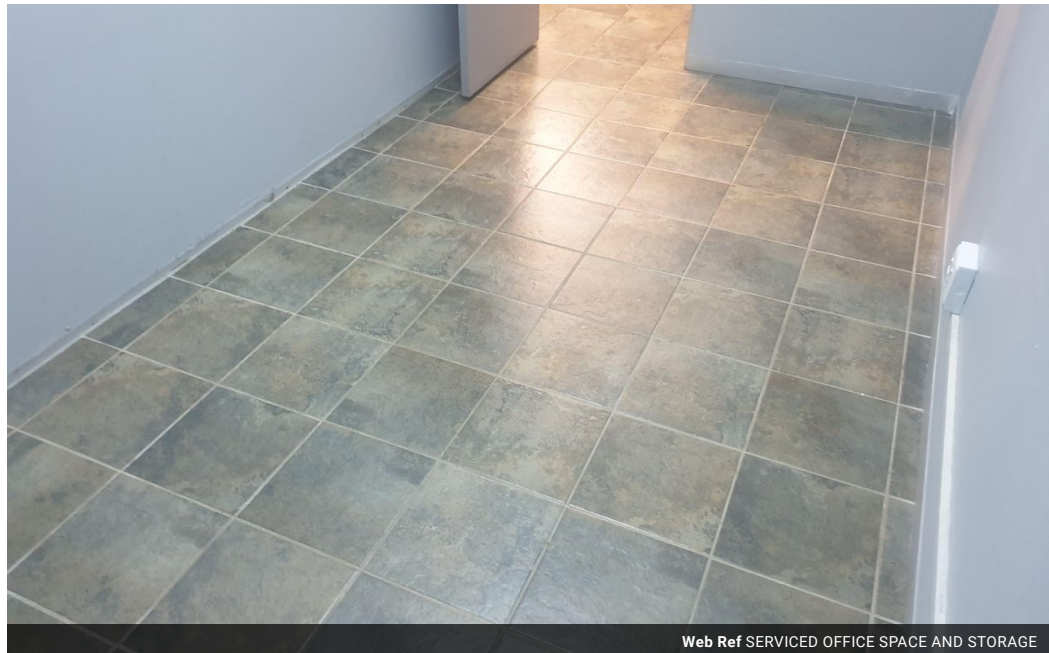
Kyle Redford
0832605042
kyle@grose.co.za

Contact Head Office

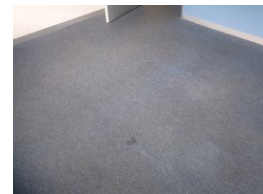
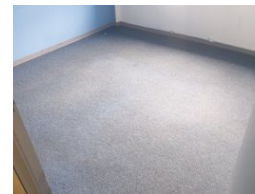
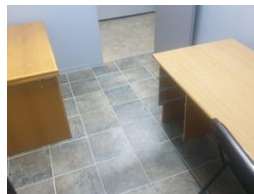
011 917 3096

167 Heidelberg Road
Boksburg South Ext.2
Boksburg

1m² Building To Let in Eastleigh



Web Ref SERVICED OFFICE SPACE AND STORAGE



R3,630 pm

Gross Monthly Rental R3,630 Excl. VAT

0 0

Serviced Offices to LET in Eastleigh

Serviced offices to cater to all start up companies and small business's alike. We have a wide variety of office sizes all available immediatly.

Monthly rentals vary depending on the size of office you need. -

- 3 x Offices 7,5m² (3,4m x 2,2m) (Guide Price: R2000/R2500 + VAT)
- 2 x Offices 11 m² (5,0m x 2,2m) (Guide Price: R3000/R3500 + VAT)
- 1 x Office 14 m² (5,0m x 2,8m) with Water Supply and Drain (Guide Price: R4000/R4500 + VAT)
- 1 x Office 10,2 m² (3,4m x 3,0m) with Aircon & external Windows (Guide Price: R4000/R4300 + VAT)
- 1 x Office 13,6 m² (4,0m x 3,4m) with Aircon & external Windows (Guide Price: R4200/R4500 + VAT)
- 1 x Office/Storage 21,6 m² (10,3m x 2,1m) R3250.00

There are also HOT DESKING or CO-WORKING options available as well.

Features

Zoning Mixed Use

Sizes

Floor Size 1m²

Extras

Reception Service Uncapped WIFI V.O.I.P telephone handset and dedicated phone number
Electricity Supply Weekly house keeping service Access to meeting rooms and board rooms
cafe

